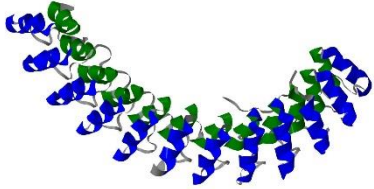


# New Topics in Protein Modeling



The School of Theoretical Modeling teaches course “**Protein Modeling**” for people who work in the field of structure of biological macromolecules.

- Registration information at [www.schtm.org](http://www.schtm.org)



New topics added to the course this month explain how to model protein structures that contain helical assemblies, such as ankyrin, HEAT/ARM, LRR, PUM, homology, TAL, and other repeats.

- Submit amino acid of your protein prior to attending and complete a model during the course